

AN ISO
9001 : 2008
COMPANY

Translate your dreams
into a **magical** reality

HARTTM
for life time steel

architectural
Hardware
FITTINGS

Delivering Versatile Elements of aesthetics

company Profile

ABOUT US:-

ALFA is leading manufacturer of corrosive resistance high grade AISI 316/304 stainless steel architectural hardware fitting since last many year. Products are manufacturing under the brand name **HART**.

The product range portfolio has a wide range of products offered by us are demanded in the market to their features, design, polish and finish, dimensional accuracy, durability.

Our products are used in worldwide in different projects such as Commercial, Industrial, Domestic and International.

Our organisation is backed by experienced team members. Who helps in understanding the diverse requirement of the client and offering the products accordingly.

INFRASTRUCTURE:-

In our company well equipped modern machinery like as a VMC, CNC, Hydraulic banding machine, Power press, Buffing machine, Cutting machine, Hydraulic press, Manual batch grinder, Lath machine, Thread machine, Drill, Surface batch grinding machine and Round pipe grinding machine, Tig welding machine etc. To produce a better & bulk production. Our total production are "in-house".

QUALITY & MANAGEMENT:-

All of our products are manufacture under one roof following ISO 9001:2008 quality standards.

We manufacture these products by using superior quality raw material which is sources from the reliable vendors. Raw materials are tested on different physical and chemical parameter to ensures their quality.

We having modern machinery to makes process of converting raw materials into finished goods.

During the process we better take care of the products to be its best when process ends. We giving equal importance production expansion as well as pre & post services.

MISSION:-

Our mission is to provide high quality products with reasonable rate, best customer service and the product guarantee. We are trying to provide satisfaction to our each and every customer and dispatch as per commitment.

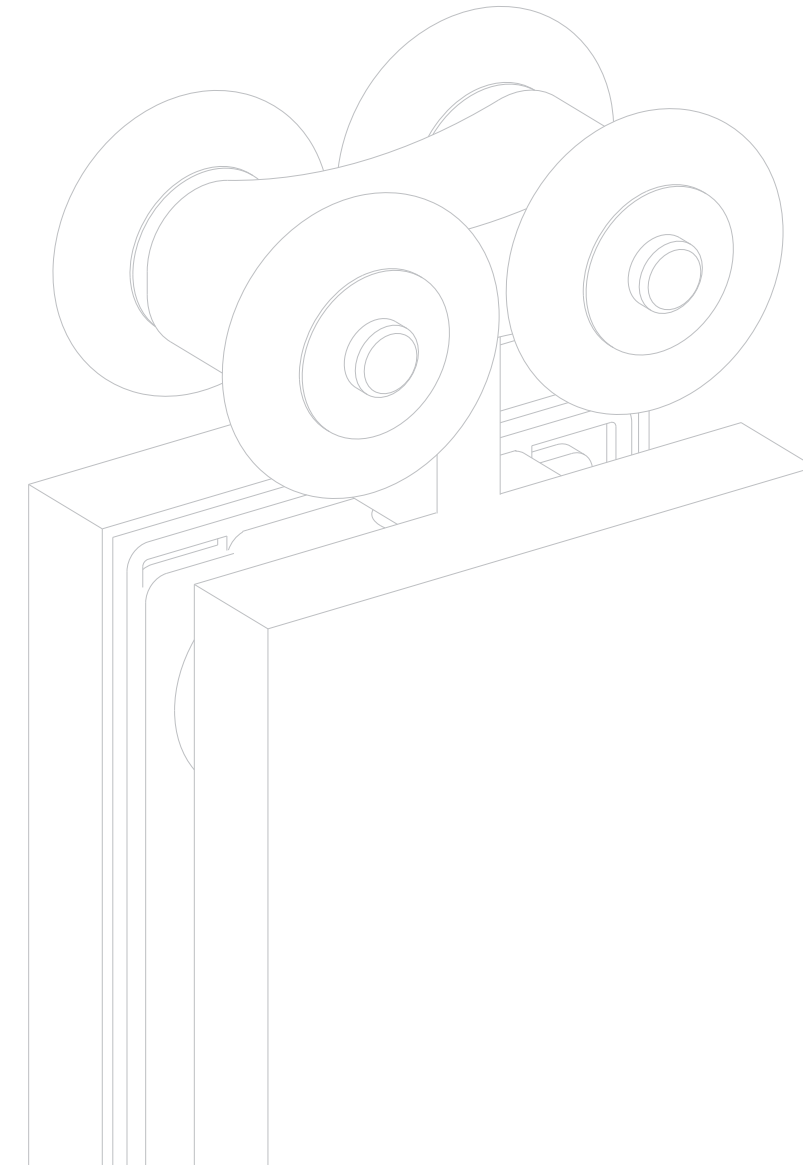
METHODOLOGY:-

We believe in strong research and development before we launch our products in market. We also gets the valuable opinion from Architectures and Interior designers for better look comfort and style of our product.

VISION:-

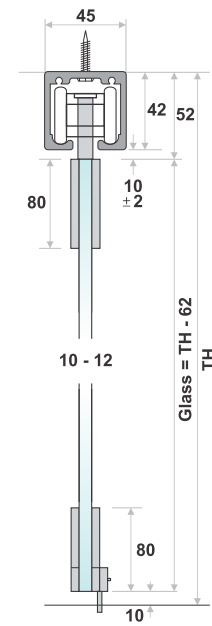
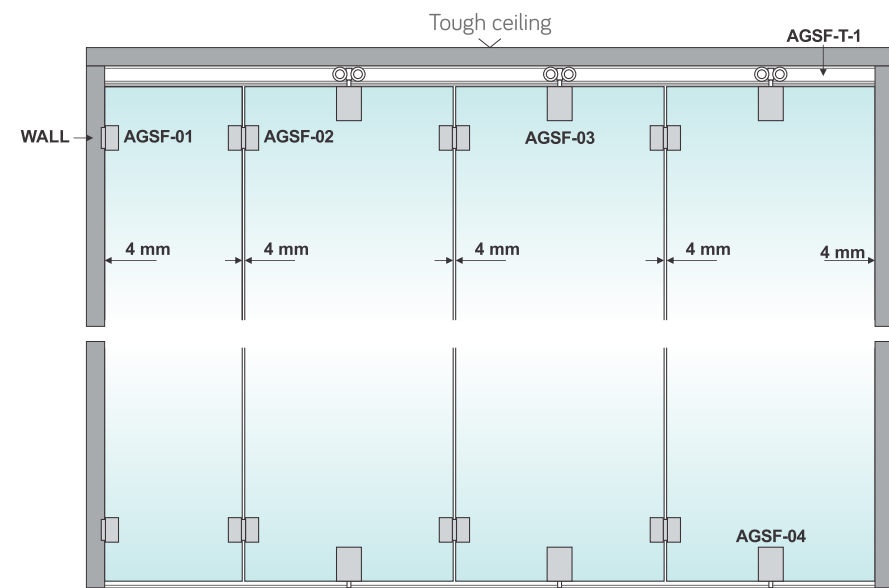
Over the years, our company has introduced high quality and latest product range for society to leave the competitors for behind in order to meet the set goal of company. We use constant changing as per market demand and client specified requirements.

Add a new class to the glass while enriching the ambience
by a few thousand notes of melodious grace.

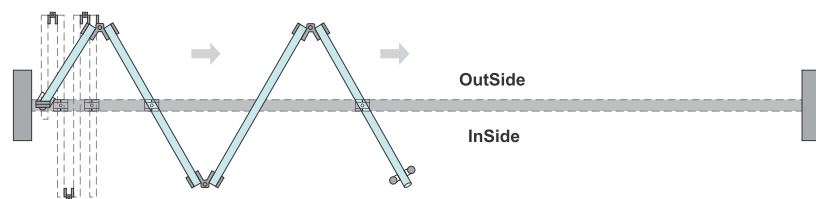


GLASS DOOR SLIDING FOLDING SYSTEM

GLASS CENTER FOLDING SYSTEM

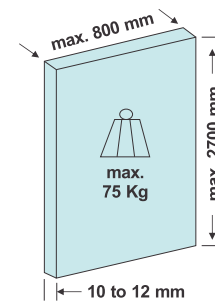


	Start panel with top and bottom wall to glass hinge	Folding panel with top - bottom roller and connected hinge device	Folding panel with top - bottom roller and connected hinge device	Folding panel with top - bottom roller and connected hinge device
Door width	Folding Door/2	800mm	800mm	800mm



Calculation of glass weight :

Thickness of glass	Approx weight Per Sq. Ft.
6mm	1.400 kg
8mm	1.900 kg
10mm	2.400 kg
12mm	2.900 kg



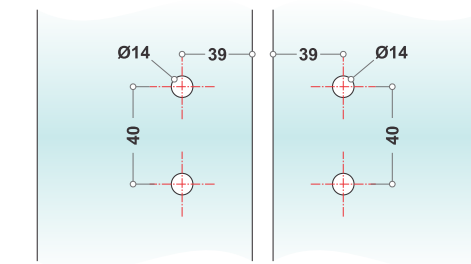
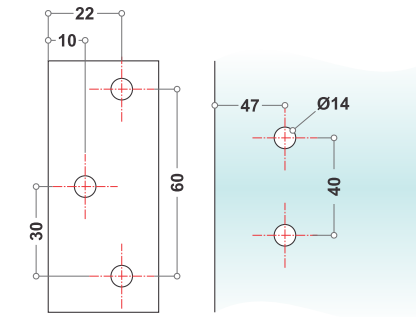
Features :

- Advanced glass center folding mechanism for up to 6 frame less glass panels with professional design concept.
- Center folding system is designed for both interior and exterior applications
- Panels are connected using a hinges system
- Nylon wheels integrated bearing for quite easy running
- Maximum weight of door : 75kgs/Panel
- Minimum Panel Width : 500mm



AGSF-01

Wall to glass connecting hinges
Finish : Satin
Material : Stainless Steel 304 Grade



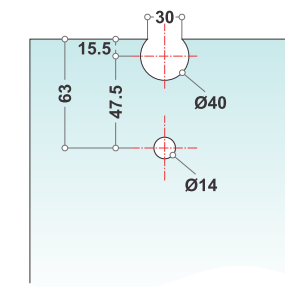
AGSF-02

Glass to glass interconnecting hinges
Finish : Satin
Material : Stainless Steel 304 Grade



AGSF-03

Glass sliding door roller
(Use : Track code AGSF-T-1)
Finish : Satin
Material : Stainless Steel 304 Grade



AGSF-04

Push bottom lock
Finish : Satin
Material : Stainless Steel 304 Grade

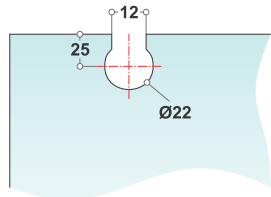
GLASS DOOR SLIDING FOLDING SYSTEM

AN ISO 9001 : 2008 COMPANY



GLASS DOOR
SLIDING FOLDING
SYSTEM

AN ISO 9001 : 2008 COMPANY

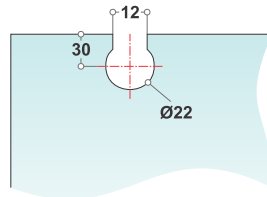


AGSF-R-1

Glass sliding door roller for 10 to 12mm glass
(Use : Track code AGSF-T-2)

Finish : Satin

Material : Stainless Steel 304 Grade

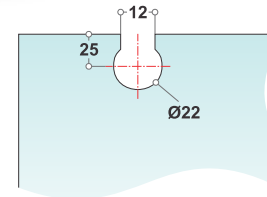


AGSF-R-2

Glass sliding door roller for 10 to 12mm glass
(Use : Track code AGSF-T-2)

Finish : Satin

Material : Stainless Steel 304 Grade

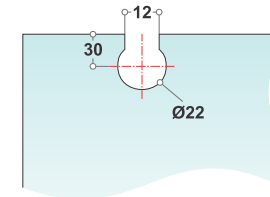


AGSF-R-5

Glass sliding door roller for 10 to 12mm glass
(Use : Track code AGSF-T-3 / T-4 / T-5)

Finish : Satin

Material : Stainless Steel 304 Grade

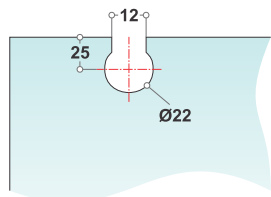


AGSF-R-6

Glass sliding door roller for 10 to 12mm glass
(Use : Track code AGSF-T-3 / T-4 / T-5)

Finish : Satin

Material : Stainless Steel 304 Grade

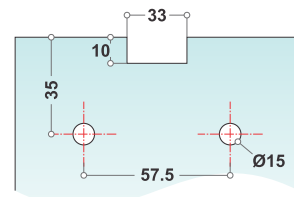


AGSF-R-3

Glass sliding door roller for 10 to 12mm glass
(Use : Track code AGSF-T-2)

Finish : Satin

Material : Stainless Steel 304 Grade

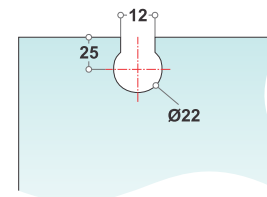


AGSF-R-4

Glass sliding door roller for 10 to 12mm glass
(Use : Track code AGSF-T-2)

Finish : Satin

Material : Stainless Steel 304 Grade

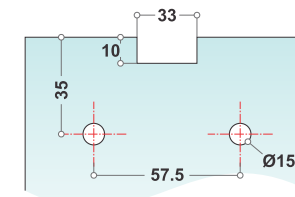


AGSF-R-7

Glass sliding door roller for 10 to 12mm glass
(Use : Track code AGSF-T-3 / T-4 / T-5)

Finish : Satin

Material : Stainless Steel 304 Grade



AGSF-R-8

Glass sliding door roller for 10 to 12mm glass
(Use : Track code AGSF-T-3 / T-4 / T-5)

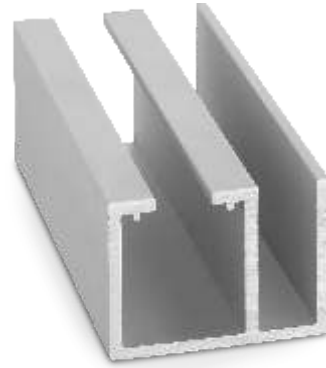
Finish : Satin

Material : Stainless Steel 304 Grade





AGSF-T-1
Top track
Material : Aluminium anodize



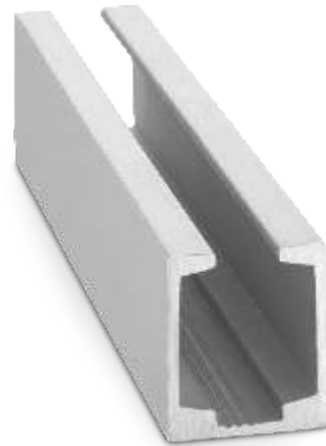
AGSF-T-2
Top track
Material : Aluminium anodize



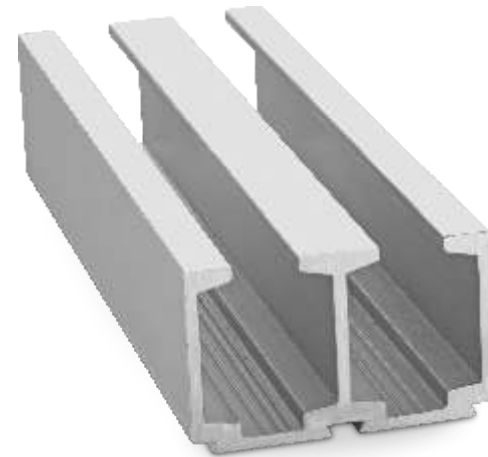
ADS-01
Door stopper
Finish : Satin / Glossy
Material : Stainless Steel 304 Grade



AFG-01
Floor guide
Finish : Satin / Glossy
Material : Stainless Steel 304 Grade



AGSF-T-3
Top track for only door
Material : Aluminium anodize



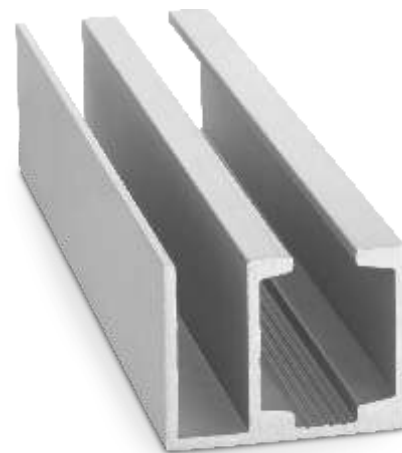
AGSF-T-4
Top track for double doors
Material : Aluminium anodize



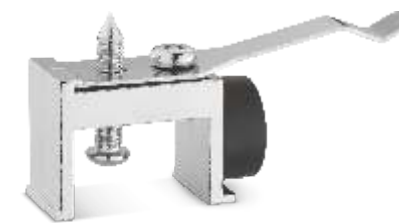
A-1
Track mounting bracket wall to track fixer
Finish : Satin / Glossy
Material : Stainless Steel 304 Grade



A-2
Wall to track connector
Material : P.V.C. solid (white)



AGSF-T-5
Top track for door & fixed glass
Material : Aluminium anodize



A-3
Door stopper
(Use : Roller code AGSF-R-1 to R-4)
Material : P.V.C. solid (white)



A-4
Door stopper
(Use : Roller code AGSF-R-5 to R-8)
Material : P.V.C. solid (white)

At **HART**, we constantly endeavor to raise the bar for excellence – be it in our designs, manufacturing or consumer relationship. We are grateful to have you as our valued client, associate and well-wisher and in order to meet your expectations – or even surpass it – we urge you to share your views with us at your convenience, so that we can improve upon perfection. We reiterate our commitment to deliver the most versatile range of architectural hardware fittings that translate your dream into a magical reality.



Mfg. & Mktd by

ALFA Industries

Rajkot (Gujarat)

🌐 www.alfahardware.com

✉ info@alfahardware.com